

Model 3138-N

P r i n t e r - A p p l i c a t o r



Weber's Label-Aire® Model 3138-N printer-applicators combine speed, flexibility and superior print quality into an extremely versatile, in-line labeling system. This model integrates a Datamax, Sato or Zebra thermal/thermal-transfer printer with an automatic label applicator for fast, consistent pressure-sensitive labeling.

The versatile Model 3138-N offers high-density, on-demand printing at 203 or 300 dpi, as well as right- or left-hand configurations. The system is ideal for high-volume operations and compliance labeling, as it accommodates a variety of label materials ranging in sizes up to 7.2" wide and 7.0" long* at print speeds up to 12.0" per second*.

Labels are printed in a cost-efficient, next-out mode, then applied by a blow-on or tamp-blow applicator. Utilizing tamp-blow, a pressure-sensitive label is automatically peeled from its liner and retained by vacuum on an applicator pad. The pad is extended (a variety of stroke lengths is available) and the label is blown onto the product from approximately 0.25".

Both methods of application permit non-contact labeling to the top, bottom or sides of passing products or cartons. Accurate to

±0.03", the Model 3138-N is ideal for labeling recessed areas and other surfaces that demand precise labeling.

The system also features a four-line digital display on its advanced controller, velocity compensation with optional encoder to control label placement, and multi-page memory to save set-up parameters. These all add up to a system capable of simple operation and changeovers.

Constructed of corrosion-resistant stainless steel and anodized aluminum, the system is suitable for operation even in harsh environments. Built-in strobe lights alert operators upon low label, low ribbon, out-of-labels or out-of-ribbon detection.

Additionally, the Model 3138-N operates with Weber's exclusive Print-Apply software, which simplifies label formatting, editing and printing. Weber also offers a wide variety of custom labels and compatible ribbons to meet virtually any labeling requirement.

KEY FEATURES

- High-speed systems integrated with a selection of printers
- Choose 203 or 300 dpi print resolution
- Handle labels up to 7.2" W and 7.0" L
- On-line labeling accurate to ± 0.03"

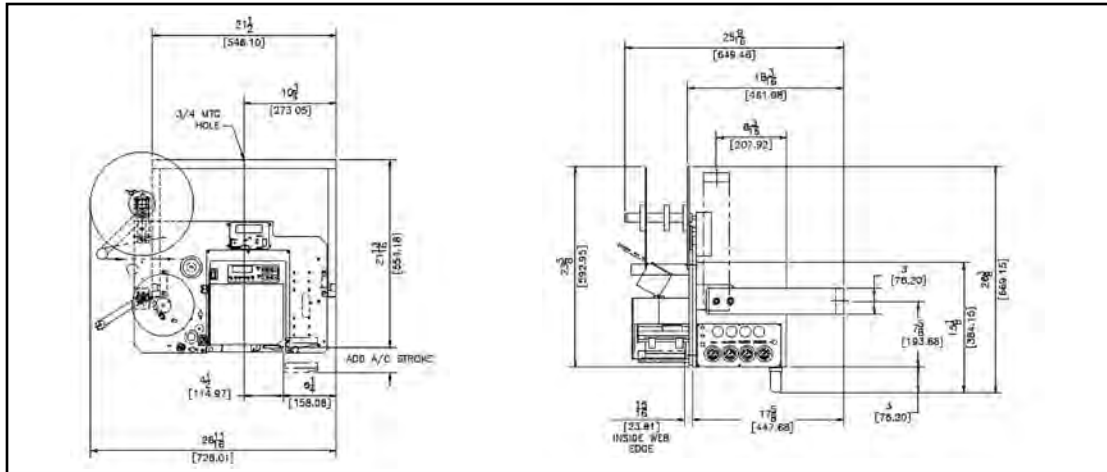
* Printer dependent

Weber®

Model 3138-N

S p e c i f i c a t i o n s

TTR Ireland,
Plunkett House,
2 Dooradoyle Road,
Limerick.T:061 303999
F:061 303977
E: kevinf@ttrireland.com
www.ttrireland.com



Dimensions

28.7"L x 25.6"W x 23.3"H
(728mm x 650mm x 592mm)

Weight

165 lbs. (75kg)

Electrical

115 Volts AC, 60 Hz, 5 amps
220 Volts AC, 50 Hz, 5 amps

Air Requirements

4 cfm at 90 psi for most applications

Product Sensing

Photoelectric

Printing Methods

Direct-thermal or thermal-transfer

Print Resolutions

203 dpi (8 dots/mm) or
300 dpi (12 dots/mm) or

Standard Label Sizes

Maximum 7.2"W x 7.0"L
(184mm x 178mm)
(Printer dependent)

Print Speed

Up to 12.0" (305mm) per second
(Printer dependent)

Labeling Speed

Contingent upon label size, label content
and printer selected

Label Placement

Accurate to ± 0.03 " (0.8mm) when labels
are produced to specifications and product
handling is controlled

Communication Interfaces

- RS-232C; Centronics compatible
- RS-422 Bi-directional IEEE
- RS-485 1284 Parallel
- Coax
- Twinax
- Ethernet

(Printer dependent and optional; must be
selected at time of order)

Print Characters and Bar Codes

Text: Selection of fonts, including OCR A &
B representation

Bar Codes: Code 39, Code 93, Code 128,
Codabar, UPC A & E, EAN 8 & 13, Inter-
leaved 2 of 5, Standard 2 of 5, Industrial
2 of 5, MSI, UPC Bookland, Matrix 2 of 5,
Postnet, UCC/EAN 128, PDF-417, Maxicode,
Data Matrix

(Text and bar codes can be rotated 360
degrees; horizontal and vertical character
expansion)

Label Roll Size

Standard diameter 12.0" (305mm)
Optional diameter 17.0" (432mm)

Labels

Die-cut, waste removed with 0.125" (3mm)
minimum separation between labels in run-
ning direction and 0.125" (3mm) maximum
web over label width; direct or thermal-
transfer media

Labeling Software

Weber Print-Apply Software

Standard Outputs

Ribbon Low, Media Out, Label Out, Label on
Pad, Low label, Applicator Ready, System
Error, Applicator Warning, Tamp Extend,
End of Web, Unlabeled Products, Air Assist,
Air Blast, Offline, Rewind Error, Print Power
Down

Standard Inputs

Apply, Print Command, Applicator Enable/
Inhibit, Reprint Command

Optional Features

- 17" power unwind
 - Label-on-pad detection
 - Tamp-back sensor
- (Consult Weber for additional options)

Weber[®]

